



**HR** STRUCTURES

HR-Structures GmbH  
Zum Hohenrain 12  
36355 Grebenhain

W: [www.hr-structures.com](http://www.hr-structures.com)  
T: +44 1332 949 800  
E: [sales-uk@hr-structures.com](mailto:sales-uk@hr-structures.com)

## RAPID DEPLOYMENT TENTS

Emergency structures designed for rapid  
deployment

# HR-Structures

## Contents

1.	<b>Inflatable Rescue Tent MZI 27</b>	4
2.	<b>Inflatable Rescue Tent MZI 39</b>	8
3.	<b>Inflatable Rescue Tent MZI 42</b>	12
4.	<b>Crew and Accommodation Tents</b>	16
5.	<b>Hangars</b>	22
6.	<b>Troop Tent MTA</b>	26
7.	<b>Troop Tent MTE</b>	30
8.	<b>Accommodation Solutions</b>	34
9.	<b>Industrial Buildings</b>	38

# HR-Structures

## Design. Innovation. Tradition.

### About us

HR-Structures GmbH is a young, owner-managed company with decades of experience in aluminium-framed event tents and industrial temporary buildings.

The company's 80,000m<sup>2</sup> global head office and ultra-modern manufacturing facilities are located in Germany. In-house quality control and a talented technical department guarantee on-going product innovation.



# MZI 27 Inflatable Rescue Tent



## Mobile inflatable tent for rapid deployment in any terrain

The MZI 27 Rescue Tent is an inflatable tent that is quickly deployed as emergency shelters, medical centres or as a tactical recreation room. Within compact external dimensions of 5.4m x 5.6m x 3m is an internal usable area of 26.5m<sup>2</sup>. However, as it only weighs 180Kg, the tent can be transported efficiently and set up in a very short time.

The MZI 27 rescue tent is made of robust PES textile with a PVC coating on both sides. This combination provides high tear, abrasion and flame resistance. The airtight structure can withstand extreme temperatures from -30°C up to +70°C. Utilising a single air chamber makes handling during assembly and maintenance easy. Overinflation from the three inflation valves is prevented with the inclusion of a pressure relief valve.

Each of the four windows is made up of insect screen, transparent window film and tent skin flap. Two 1.8m x 2m entrance areas include curtains and provide good ventilation and flexible use. Eight 0.4m diameter heating hoses and four 150mm diameter cable/hose bushings are already integrated.

## Technical Details

<b>Internal area</b>	26.5m <sup>2</sup> [approx.]
<b>External dimensions</b>	5.4 × 5.6 × 3m [approx.]
<b>Internal dimensions</b>	5.4 × 4.9 × 2.65m [approx.]
<b>Packed dimensions</b>	1.5 × 1 × 0.8m [approx.]
<b>Weight</b>	180kg [approx.]
<b>Operating pressure</b>	0,19 - 0,21bar
<b>Temperature range</b>	-30 bis +70°C
<b>Number of inlet curtains</b>	2
<b>Entrance curtain dimensions</b>	1.8 × 2m [approx.]
<b>Doors with hook and loop fastener</b>	Yes
<b>Number of windows</b>	4
<b>Air openings above the doors</b>	2
<b>Number of sleeves for the heating</b>	8
<b>Number of sleeves for cables, hoses</b>	4
<b>Number of air chambers</b>	1
<b>Number of inflatable/pressure relief valves</b>	3 / 1
<b>Number of anchor ropes/anchorages</b>	10 / 10
<b>Diameter of the structural tubes</b>	0.35m [approx.]
<b>Handles on the frame for hanging accessories</b>	Yes
<b>Anti-slip base</b>	Yes
<b>Removable base</b>	No
<b>Transport bag</b>	Yes

## Equipment

22 x anchor pins, 1 x hammer, 1 x case with repair kit (1 x pressure relief valve, 1 x pressure relief valve spanner, 1 x inflation valve, 1 x through-air coupling, 2 x retaining nut with screw, 1 x screw with washer, 1 x Allen key, 1 x tent glue set) and 1 x hand pump

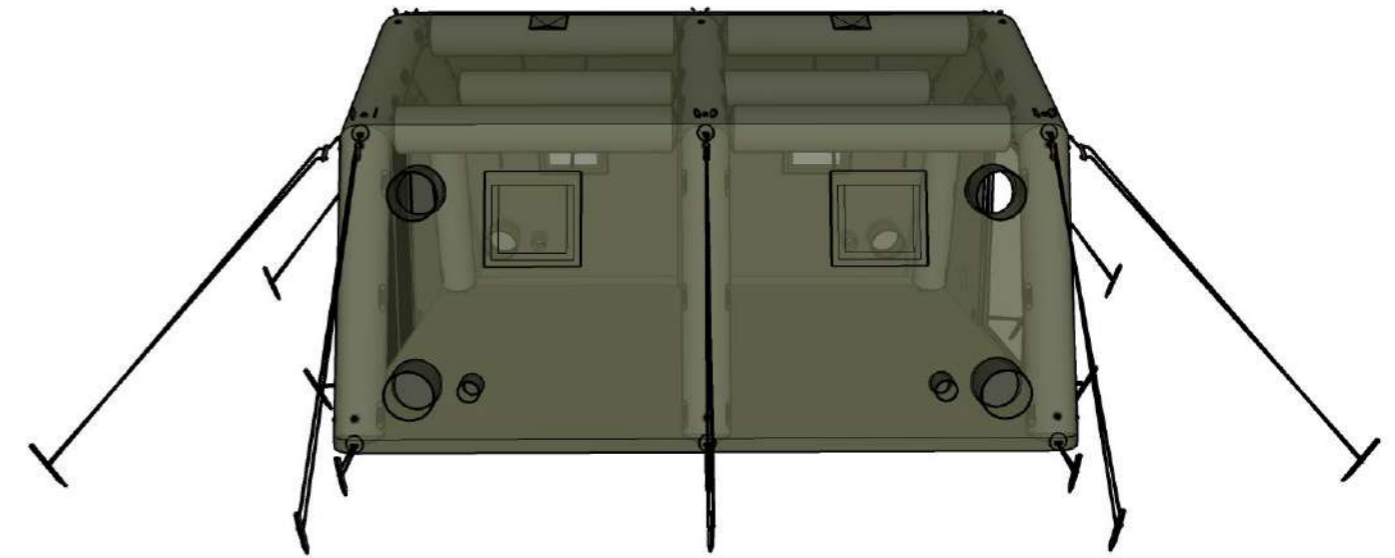
# MZI 27 Inflatable Rescue Tent

## Applications

- Emergency shelters in crisis or disaster areas
- Medical tents at major events or in the field
- Recreation rooms for emergency services or personnel
- Command centre or storage tent
- Mobile workshop or technical tent

## Accessories and Equipment

- 3-layer, PES textile and fleece removable insulation lining
- PU-coated, waterproof sanitary lining
- Partition curtains (lengthwise or crosswise to divide the space)
- Sun protection with inflatable spacer (PVC net)
- Transport bag, hand pump, hammer, anchor pins
- Repair kit including valves, screws, adhesive set



## Benefits

- Compact transport and easy inflation for fast deployment
- Stable & weatherproof in extreme temperatures from -30°C to +70°C
- PVC-coated PES fabric is robust, flame retardant and waterproof
- Optimum ventilation through windows, ventilation slits and entrances
- Versatile use as accommodation, first aid station, command centre and more
- Expandable with optional equipment such as insulation, sun protection or partition walls



# MZI 39 Inflatable Rescue Tent



## High Capacity Inflatable Tactical Tent

The MZI 39 inflatable rescue tent is ideal as a medical tent, accommodation for personnel or a command centre. It has been designed for applications where more space and flexibility are required and provides a usable internal working area of 39m<sup>2</sup>. Inside dimensions are 7.92m long, 5.6m wide and 2.65m high which is big enough for twelve 1.9 x 0.7m x 0.45m camp beds.

The inflatable structure consists of a single air chamber system with four inflation valves and a pressure relief valve. The tent is made of fireproof, waterproof and abrasion-resistant PVC-coated PES fabric which is suitable for extreme temperatures from -30°C to +70°C. It can be erected on site quickly using compressed air or an electric pump.

There are four 1.8 x 2m entrances with two ventilation slots above each door and four three-layer windows. Heating and services are provided through eight heated hose (Ø 400mm) connections and four (Ø 150mm) cable and hose access points.

## Technical Details

<b>Internal area</b>	39 m <sup>2</sup> [approx.]
<b>External dimensions</b>	7.92 × 5.6 × 3m [approx.]
<b>Internal dimensions</b>	7.92 × 4.93 × 2.65m [approx.]
<b>Packed dimensions</b>	1.45 × 1.1 × 0.9m [approx.]
<b>Weight</b>	239 (Sun canopy = 42kg, insert = 36kg)
<b>Operating pressure</b>	0,19 - 0,21bar
<b>Temperature range</b>	-30 bis +70°C
<b>Number of entrance curtains</b>	4 (2x front und 2x side)
<b>Entrance curtain dimensions</b>	1.8 × 2m [approx.]
<b>Doors with Velcro fastener</b>	Yes
<b>Number of windows</b>	4
<b>Air openings above the doors</b>	2
<b>Number of sleeves for the heating</b>	8
<b>Number of sleeves for cables, hoses</b>	4
<b>Number of air chambers</b>	1
<b>Number of inflatable / pressure relief valve</b>	4 / 1
<b>Number of anchor ropes / anchorages</b>	12 / 8
<b>Diameter of the structural tubes</b>	0.35m
<b>Handles on the frame for hanging accessories</b>	Yes
<b>Anti-slip base</b>	Yes
<b>Removable floor</b>	No
<b>Transportbag</b>	Yes

## Equipment

20 x anchor pins, 1 x hammer, 1 x case with repair kit (1 x pressure relief valve, 1 x pressure relief valve spanner, 1 x inflation valve, 1 x through-air coupling, 2 x retaining nut with screw, 1 x screw with washer, 1 x Allen key, 1 x tent glue set) and 1 x hand pump

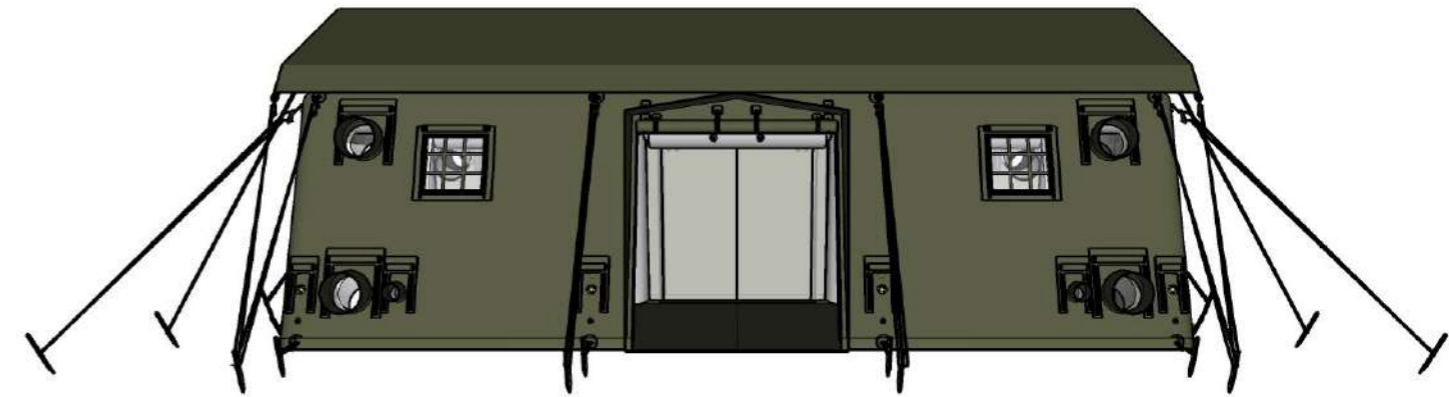
# MZI 39 Inflatable Rescue Tent

## Applications

- Spacious emergency shelters for relief operations
- Tactical medical tent or treatment room
- Troop recreation rooms and sleeping quarters
- Command centres in field camps or temporary bases
- Technical, storage or logistics tent
- Can be connected with HF-28A.3

## Accessories and equipment

- 3-layer with PES fleece insulating liner
- Waterproof, PU-coated sanitary lining
- Curtains for room partitioning (lengthwise/crosswise)
- Sun protection with 4 inflatable support elements
- Connecting tunnel for HF-28A.3 and HF-46A.3
- Repair kit, hand pump, hammer, anchor accessories
- Transport bag



## Benefits

- 39m<sup>2</sup> of space for up to 12 beds
- Robust flame retardant, waterproof and UV-resistant structure
- 8 heating connections and 4 hose/cable outlets
- Quick to set up with electric pump or compressed air
- Weather-resistant and ready for use from -30°C to +70°C
- Optional insulating liner, sun protection or connecting tunnel



# MZI 42 Inflatable Rescue Tent



## Mobile Inflatable Rescue Tent For Rapid Deployment In Extreme Conditions

The MZI 42 inflatable rescue tent is a flexible solution for emergency operations, first response medical care or temporary accommodation. With a usable area of around 42m<sup>2</sup> and four access options (one on each side of the tent), it provides emergency accommodation for up to 12 people.

The robust tent is designed for extreme conditions and is constructed from fireproof, waterproof PES textile with a PVC coating on both sides. It is capable of withstanding temperatures from -30°C to +70°C. Four air chambers and four inflation and pressure relief valves make inflation using either compressed air or an electric blower quick and safe.

Up to four 0.7 × 0.5m windows with insect protection, transparent window and opaque cover can be integrated as an option. Eight heated hose connections (Ø 400mm) and four cable/hose feedthroughs (Ø 150mm) make the tent particularly versatile.

## Details

<b>Internal area</b>	42m <sup>2</sup> [approx.]
<b>External dimensions</b>	7.55 × 5.6 × 2.8m [approx.]
<b>Internal dimensions</b>	7.55 × 5.03 × 2.5m [approx.]
<b>Packed dimensions</b>	1.3 × 1.1 × 0.75m [approx.]
<b>Weight</b>	195 kg (tent = 169kg)
<b>Operating pressure</b>	0,19 - 0,21bar
<b>Temperature range</b>	-30 bis +70°C
<b>Number of entrance curtains</b>	4 (one on each side of the tent)
<b>Entrance curtain dimensions</b>	1.8 × 1.9m [approx.]
<b>Ventilation openings above the doors</b>	2
<b>Number of heating sleeves</b>	8
<b>Number of sleeves for cables, hoses</b>	4
<b>Number of air chambers in the construction</b>	4
<b>Number of inflatable / pressure relief valves</b>	4 / 4
<b>Number of spreader bars</b>	6
<b>Number of anchor ropes / anchorages</b>	12 / 12
<b>Diameter of the structural tubes</b>	300
<b>Handles on the frame for attaching accessories</b>	Yes
<b>Anti-slip base</b>	Yes
<b>Removable base</b>	No
<b>Transport bag</b>	Yes
<b>Equipment</b>	24x anchor pins, 1x hammer, 1x repair kit
<b>Max. number of beds [1.9 × 0.7 × 0.45 m]</b>	12
<b>Inflation options</b>	Compressed air via a pressure hose, electric blower

### Available colours for the tent roof:



# MZI 42 Inflatable Rescue Tent

## Applications

- Disaster relief first aid tent
- Mobile first-aid station for major emergencies
- Rescue and protective tent in the event of extreme weather or evacuation
- Accommodation tent for emergency services
- Treatment area at major events

## Accessories and Equipment

- Partition curtains for room partitioning (lengthwise or crosswise)
- Up to 4 × 3-layer windows (fly net, clear window, fabric cover)
- Additional ballasting with water weight bags (4 recommended)
- Hand tools and repair kit
- Transport bag for easy logistics
- Insulating liner and sanitary lining (coming soon)



## Benefits

- Ideal for medical emergencies, rescue operations or temporary accommodation
- Quickly inflated with blower or compressor
- Four air chambers help maintain tent integrity if there's a leak
- Compact to transport as it weighs only 169kg (195kg with accessories)
- Entrances on all sides of the tent makes it highly accessible
- Resilient weatherproof and flame retardant structure with non-slip floor
- Customisable with partition curtains, window options and additional anchoring points



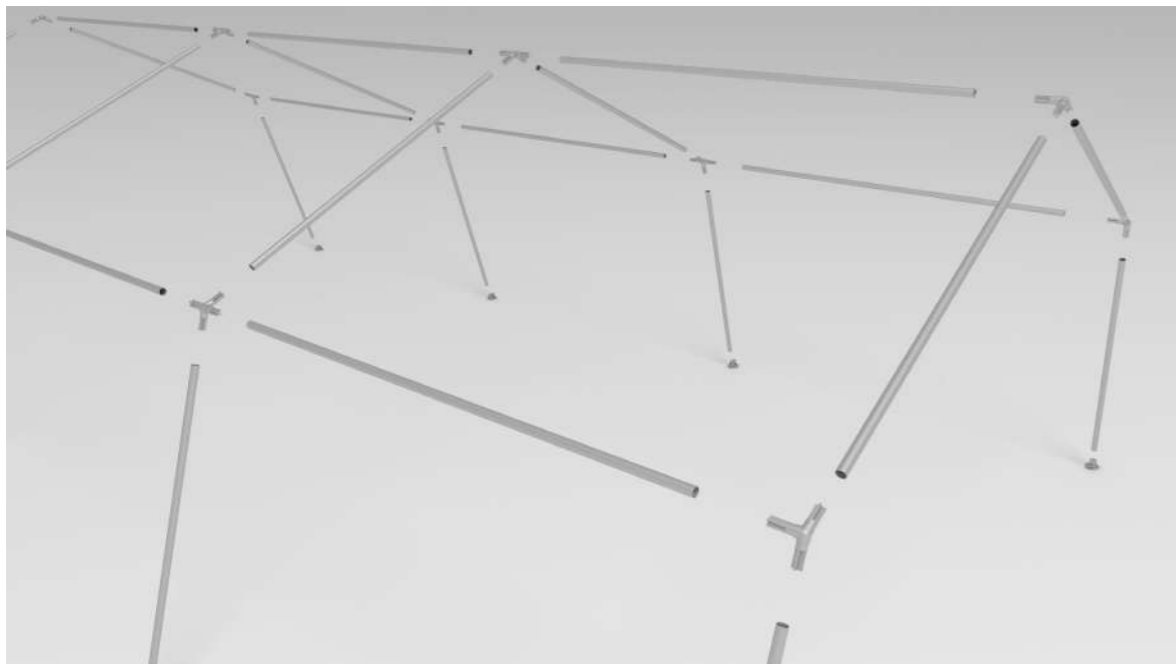
# Crew and Accommodation Tents

With our crew and accommodation tents, the emergency services have the right accommodation on site at all times.

Numerous fire brigades, relief charities, local authorities and aid organisations successfully use our crew and accommodation tents for emergency operations, disaster relief, refugee camps and as fire service tents.

We supply nine different sizes of accommodation tent ranging in length from 4m up to 12m. The smaller tents provide space for 4 to 6 people. With around 70m<sup>2</sup> of internal floorspace, the largest can accommodate up to 20 people.

The plug-in system enables quick and simple assembling and dismantling by a small team with no specialist knowledge. The tents can be customised with accessories including floor coverings, partition walls and connecting walkways.



## Features

- Quick assembly and disassembly
- Simple plug-in system requires no tools
- Breathable cotton-polyester canvas for maximum comfort inside the tent
- Attractive purchase price
- Wide range of variants and optional equipment
- Optional waterproof polyester tent floor



Span	Length	Spacing	Eave height	Ridge height	Frame profil
4.75m - 5.90m	max. 12.00m	2,50 / 2,00m	1.70m & 1.90m	2.50m - 2.90m	40 × 15mm

## Specifications

Typ	Span (m)	Length (m)	Eave height (m)	Ridge height (m)	Area (m)	Number of beds (m)
P-10	4.75	5.00	1.70	2.50	23.75	4-6
P-11	5.90	4.00	1.90	2.90	23.60	6
P-12	5.65	6.00	1.70	2.70	33.90	10
P-13	5.90	6.00	1.90	2.90	35.40	10
P-16	5.65	8.00	1.70	2.70	45.20	12
P-17	5.90	8.00	1.90	2.90	47.20	12
P-20	5.65	10.00	1.70	2,70	56.00	16
P-21	5.90	10.00	1.90	2.90	59.00	16
P-22	5.90	12.00	1.90	2.90	70.80	20

## Roof And Side Cladding

Variante 1	Cotton / Polyester
Variante 2	Roof: PVC, side walls: cotton Polyester
Variante 3	PVC
Variante 4	Outer tent PVC, inner tent cotton fabric

## Transport Volume

Minimum	P-10 cotton / polyester: 2.6 × 0.8 × 0.75m approx. 77kg
Maximum	P-22 cotton / polyester: 2.6 × 0.8 × 1.0m, approx. 172kg Longest component: 2.44m

# Crew and Accommodation Tents

## Applications

- Emergency accommodation in disaster situations
- Accommodation tents for members of the emergency services
- Crew tents for camps, festivals and major events
- Accommodation for mobile medical teams
- Temporary sleeping areas for aid-workers
- Social rooms for temporary construction sites or operations

## Accessories and equipment

- Cotton/polyester, PVC and combination canvases
- Polyester waterproof floor
- Windows with mosquito net for ventilation and keeping insects out
- Connecting walkways and partition walls
- Secured with eyelet loops and buckle straps
- Frame and tarpaulin parts stored in supplied packing bags
- Ground pegs and transport bag included
- Retaining loops used for stable gable connection
- Technical assembly instructions included



## Benefits

- Quick assembly with tool-free plug-in system, even for inexperienced workers
- 9 models of different sizes for 4 to 20 people
- Durable cotton/polyester or PVC construction
- Air-permeable fabric and windows with mosquito nets maintain optimum indoor climate
- Versatile range of uses in emergencies, camps, operations or events
- Wide range of accessories includes groundsheet, connecting aisles, stuff sacks and more



# Equipment and Accessories



## Tent Canvas

The standard tent canvas is cotton/polyester although a PVC version is also available.



## Eye Loop Fasteners

Different sections of the canvas are held in place by simply threading the loops through the eyelets.



## Ground pegs

The ground pegs firmly anchor the tent in the ground in all weather conditions. They are supplied in a bag for easy transportation and to avoid losing any pegs



## Tent Frame

The disassembled tent frame is supplied in a holdall with carrying handles for effective transportation and storage when not in use.



## PVC Ground Strips

Along the bottom of both the cotton/polyester and PVC tents is a strip of PVC designed to protect the tent from water ingress.



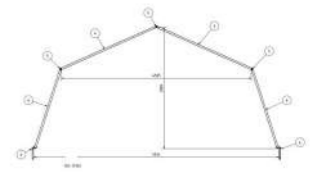
## Tent Canvas Bag

The tent canvas is supplied in a robust PVC holdall to keep the material safe during transportation and storage.



## Entrance Flap Retention

The gable ends of the tent can be opened up for ease of access. Retaining loops are used to securely fasten each flap in the open position.



## Instructions

Each tent is supplied with detailed instructions showing how to pitch these tents quickly and correctly by both experienced and inexperienced users.



## Windows

Windows with mosquito nets allow fresh air to circulate while preventing flying insects from entering the tent.



## Tent Canvas Fixing Straps

The canvas is securely and accurately fastened to the tent frame with buckle straps. These keep the tent canvas taut which helps to prevent excessive movement and wear in windy weather.



## Frame Fastenings

The frame is held in place using robust pegs that are driven into the ground. Guy ropes hold the canvas in place and allow it to be pulled taut. This combination anchors the tent to provide a stable and windproof structure.



## Frame Connectors

Die-cast frame pole connectors provide added strength and stability to the tent. They are stored and transported in their own bag.



# Hangars

## Robust room solution for demanding applications

Our standard hangar dimensions are 16 × 20m with side heights up to 6.5m. However, we can supply versions with widths of up to 26.3m which are precisely adapted to the individual requirements on site and provide up to 805m<sup>2</sup> of usable floorspace.

Our hangars are ideal for storing aircraft and vehicles, and as field workshops or for general storage wherever it's needed. The stable design supports wind loads of up to 120km/h (gusts of up to 150km/h) and snow loads of up to 50kg/m<sup>2</sup>.

Each hangar is built around a frame made of extruded, anodised, hollow aluminium profiles measuring 200 × 120 × 3mm. T-pieces and straps in the roof and walls provide additional wind bracing and allow the whole structure to be tensioned.

The frame is connected along the ridge and eaves with galvanised steel joints. None of the frame components is longer than 5.8m to aid transportation.

Our hangars are anchored to the ground using ground plates, pegs or dowels. Thanks to the outer struts and locking poles, erection poles, purlin forks and measuring pole, each hangar can be assembled quickly and safely.



## Benefits

- Large spans up to 26.3m
- Stable design withstand wind loads up to 120km/h and snow loads up to 50kg/m<sup>2</sup>
- Quick assembly and dismantling
- Designed so no parts are longer than 5.8m to aid transportation
- Stable buildings with wind bracing, outer struts and ground anchoring

## Accessories And Optional Equipment

- Locking poles, erection poles, purlin forks, measuring pole
- Ground anchor plates, ground pegs or dowels
- Wind bracing in the roof and on the sides
- Roof spar 1x butt-jointed
- External stabilising side struts

# Hangars

## Applications

- Maintenance workshops
- Vehicle storage and protection
- Material storage or warehouse in the field
- Temporary covered space
- Logistical hubs and shipment centres
- Protection for air or land-based systems

## Maximum Operational Readiness Anywhere

Our modular hangar systems are specially designed for rapid deployment and versatile use. Thanks to their sophisticated design, robust materials and simple assembly, they are ideal for demanding applications under extreme conditions.

Whether as a temporary solution or long-term infrastructure, our hangars offer protection, space and stability wherever you need it.

## Technical Details

Hangar	Width (m)	Length (m)	Side height (m)	Girder spacing (m)	Snow load (kg/m <sup>2</sup> )	Roof pitch	Windload (km/h)
21×22.5m 4.5m SH	21	22.5	4.5	2.5	100	30°	120 gusts up to 150
23×35m 6.5m SH	23	35	6.5	2.5	75	30°	120 gusts up to 150
26.3×25m 2.75m SH	26.3	25	2.75	2.5	50	30°	120 gusts up to 150

## Three Variants - The Right Hangar For Every Requirement

The table shows a selection of our available hangar sizes with different side heights and statics. The smallest is 21m wide with a side height of 4.5m and the largest has a span of 26.3m with the same side height.

The roof pitch on each version is 30° and wind load resistance is up to 120km/h (gusts up to 150km/h). The customised snow load capacity - from 50 to 100kg/m<sup>2</sup> can be tailored for a wide range of locations.

Our hangars provide the ideal solution for storage, maintenance, housing vehicles of various types and sizes or as technical workshops in a wide range of locations and climates.



# MTA Troop Tent

## Modular Accommodation Tent for Military and Civilian Operations

The MTA troop tent offers a modular and flexible solution for mobile use. With a basic width of 5m and a length of 10m (which can be extended in 5m increments) the tent can be adapted to different requirements.

The side height is 2.3m and the trusses are 5m apart. The tent frame consists of anodised aluminium profiles and steel connections, which ensures high stability. This allows us to build the MTA troop tents to bear wind loads of up to 125km/h and a snow load of up to 60kg/m<sup>2</sup> for use in inhospitable locations.

The tent's cladding is available in white, olive or sand and is made of opaque PVC which is certified to DIN 4102/B1 and M2. The gable opening of the tent is equipped with a zip to allow easy access and additional ventilation.

The tent can also be combined with various floor solutions such as a heavy-duty floor, cassette floor or a steel/aluminium substructure, depending on the specific requirements of the application.



## Benefits

- Quick assembly by experienced and inexperienced personnel
- Expandable to changing requirements
- Compact to transport for mobile use
- Weather-resistant and robust for continuous use
- Different colour options for different applications
- Highly resilient tents tested for wind and snow loads



# MTA Troop Tent

## Applications

- Accommodation tent
- Recreation and social rooms
- Operations centre or command post
- Emergency accommodation
- Storage tent

## Accessories and Equipment

- Heavy-duty floor, cassette floor, steel-aluminium substructure floor options
- Canvases available in white, olive green and sand
- Tent sides available with optional windows and doors
- Lighting systems and heating modules available on request
- Transport packaging for storage and logistics



## Technical Details

Features	Description
Tent width	5m
Tent length	10m (extendable)
Side height	2.3m
Truss spacing	5m
Frame material	Anodised aluminium / steel connections
Wind load	Up to 125km/h
Snow load	60kg/m <sup>2</sup>
Cladding material	PVC, translucet, B1/M2
Gable opening	With zip
Transport	Compact volume, ideal for mobile use



# MTE Troop Tent

## Versatile Accommodation Tent for Mobile Civilian and Military Operations

The modular design and high adaptability of the MTE troop tent make it ideal for temporary accommodation, command centres or medical facilities in the field. With a basic width of 6m and variable lengths from 3 to 9m (it can be extended in 3m increments), the tent can be adapted to the requirements on site.

The side height of 2.5m and truss spacing of 3m enable efficient use of the interior space; even with intensive use. The robust frame made of anodised aluminium in combination with high-strength steel connections make for a robust and durable system. This will withstand wind speeds of up to 125km/h and snow loads of up to 60kg/m<sup>2</sup>.

The tent is equipped with an opaque white, olive green or sand PVC canvas. All are certified to DIN 4102/B1 and M2 for fire prevention. The gable ends can be zipped open although an integrated door for easy access and effective ventilation can be added on request.

The MTE can be flexibly configured with various floors and other optional accessories and equipment. There are even solar panel modules and an IR blocking canvas for protection against detection visually and by heat signatures.



## Advantages

- Quick assembly even by untrained personnel
- Length increases in 3m modules
- High stability and weatherproofing in adverse conditions
- Wide range of useful accessories
- Choice of colours and camouflage options
- Protection from dust and light for sensitive applications

## Solar panels for temporary use

Lightweight, flexible modules on textile roofs with monocrystalline silicon ensure a reliable energy supply even in remote locations.

**Weight:** Built for lightweight supports, the solar panels weigh only 3-4kg/m<sup>2</sup>.

**Montage:** Easy to install from the eaves.



# MTE Troop Tent

## Applications

- Accommodation for task forces and troop units
- Social and recreation rooms
- Mobile operations centre / command post
- Emergency accommodation
- Material and equipment storage
- Treatment tent / mobile medical unit
- Hospital or triage tent

## Accessories and equipment

- Heavy-duty floor, cassette floor, steel and aluminium substructure options
- Canvases in various colours:
  - Standard canvas colours are white, olive green and sand
  - IR reflection helps avoid detection and keeps interior cooler
  - Inner tarpaulin has floor connection and zip door
  - Apertures for air conditioning and heating hoses

## Accessories And Equipment

### • Further Options:

- Mesh windows
- Solar cells for energy self-sufficient operation
- Lighting & heating systems
- Transport packaging

## Technical details

Features	Description
Tent width	6m
Tent length	3m / 6m / 9m (extendable)
Side height	2.5m
Truss spacing	3.0m
Frame material	Andonised aluminium / Steel connections
Wind load	up to 125km/h
Snow load	60kg/m <sup>2</sup>
Cladding material	PVC, translucent, B1/M2
Gable With	Zip opening and fixed dpr
Transportation	Compact volume for mobile use



# Accommodation Solutions

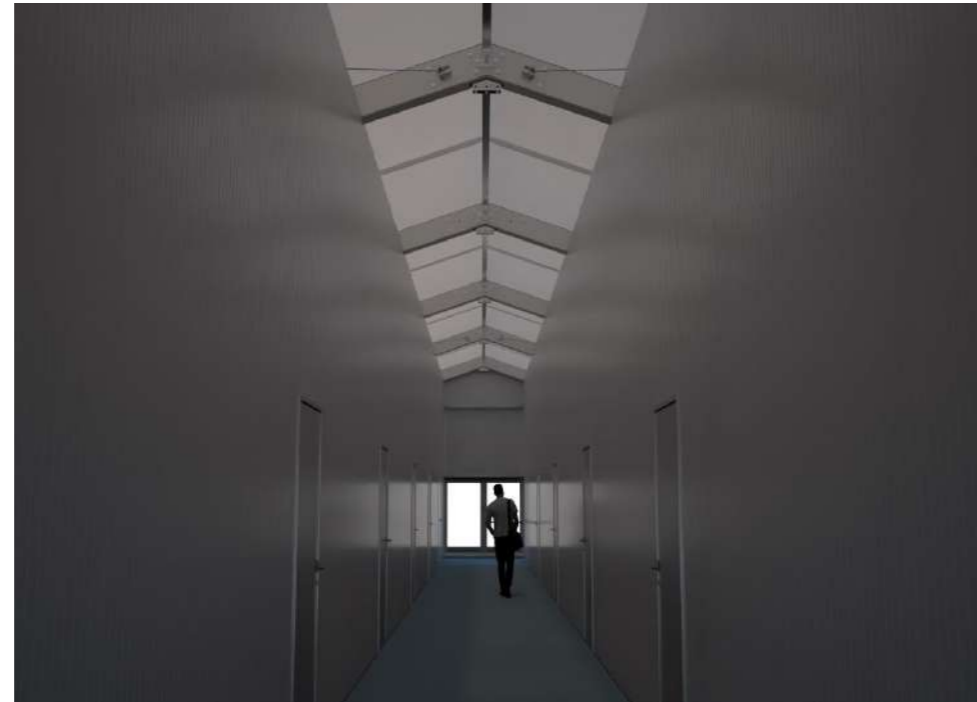
## Modular Structure Solution for Temporary Accommodation and Medical Operations

The 12 × 30m ICE module was specially developed for temporary accommodation, medical use and emergency use. With a side height of 3.3m and 360m<sup>2</sup> of floor space, the tent offers a flexible space solution with a clearly structured interior layout comprising:

- Twelve 5 × 5m bays connected by a 2m wide centre aisle.
- Access to each to each bay is via a separate 1 × 2m door
- Entry into the hall is via two glass doors

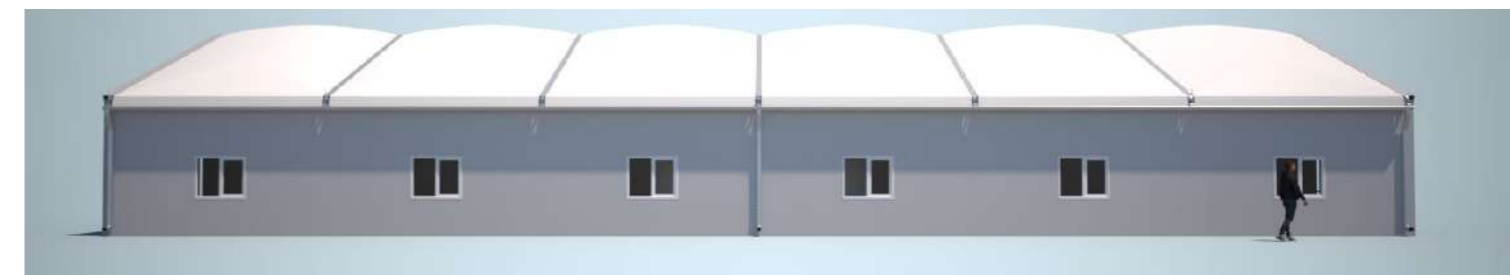
The outer shell consists of an insulated thermal roof and 60mm thick sandwich panel walls. The interior partition walls are also made of 60mm sandwich panels to provide a high level of thermal and acoustic insulation. Each bay has a large 1 × 2m window to provide daylight.

The flexible ICE module can be extended to adapt it to changing conditions and uses.



## Benefits

- Structured tent layout with 12 individual bays
- Insulated for sound and heat
- Thermal roof maintains working temperatures while being energy efficient
- Includes heating, air conditioning and lighting systems
- Bay have electrical power and a window and door
- Expandable structures can be combined with sanitary containers
- Access via two double-leaf glass doors
- Emergency exit lighting and integrated rain gutter



# Accommodation Solutions

## Applications

- Temporary emergency shelters and evacuation support
- Mobile medical treatment wards
- Quarantine or isolation centres
- Staff accommodation in crisis or disaster areas
- Expansion of existing infrastructure

## Accessories And Equipment

- Interior fittings with bay partition walls made of 60mm sandwich panels
- Individual doors for each bay
- Large windows in each bay let in daylight
- Double-leaf glass doors as main entrances
- Lighting system including main lighting and emergency exit signs
- Temperature control provided by heating and air conditioning systems
- 230V earthed power and USB sockets USB connections in each bay
- Temperature regulation enhanced by thermal roof with integrated insulation
- Roof gutters for draining rainwater

## Accessories And Equipment

- Modular extension units for additional rooms
- Sanitary container connection for integrated sanitary facilities
- Foundation solutions and floor connection on request

## Technical Details

Features	Description
Floor area	12 × 30m = 360m <sup>2</sup>
Side height	3.3m
Roof design	Insulated Thermoplane
Side walls	Sandwich panels 60mm. vertical
Interior partition walls	Sandwich panels 60mm
Interior layout	Twelve 5 × 5m bays with 2m aisle
Bay access	1 Door each 1 × 2m
Window pro cabin	1 Window each 1 × 2m
Main entrances	Two double-leaf glass main entry doors
Equipment	Heating, air conditioning, lighting including emergency exit lighting
Expandability	Modular constructions allows tent to be expanded
Sanitary container	Integration possible



# Our Lightweight Industrial Buildings

## Industrial buildings - Innovative solutions "Made in Germany"

From simple industrial tents and canopies to uninsulated or insulated industrial or insulated industrial buildings, we offer you a wide range of high-quality aluminium constructions. Thanks to our expertise in lightweight industrial buildings, we make optimum use of the advantages of this resilient, sustainable and cost-efficient material. Our aluminium industrial buildings can also be erected quickly without foundations.

Our industrial buildings provide companies from a wide range of sectors with a flexible and economical way to meet space and storage requirements. We always focus on quality and costs to ensure a long-term and efficient investment.

Thanks to our innovative production processes and use of the latest technology, we can build the insulated or non-insulated industrial building you need.



## Canopies

Roofing is the quickest and most cost-effective solution for providing additional protection for weather-resistant goods. With protection from above in the form of PVC or corrugated steel roofs and open sides, our canopies can be used for loading transporters and as a transition or tunnel.

## Non-Insulated Buildings

Our non-insulated industrial buildings are an inexpensive way to protect temperature-insensitive goods. With all-round protection in the form of PVC or corrugated steel panels, this lightweight space solution is more secure than our canopies.

## Insulated Buildings

Our insulated industrial buildings protect temperature sensitive goods. Thanks to all-round insulation in the roof and walls, this version can be used in a wide range of applications from storage to production.





# HR STRUCTURES

**HR-Structures GmbH**  
Zum Hohenrain 12  
36355 Grebenhain

**W:** [hr-structures.com/en](http://hr-structures.com/en)  
**T:** +44 1332 949 800  
**E:** [sales-uk@hr-structures.com](mailto:sales-uk@hr-structures.com)



04/2025